

THE FSU REAL ESTATE NETWORK'S 21st ANNUAL

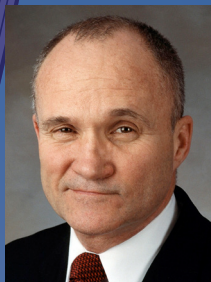
REAL ESTATE TRENDS CONFERENCE

OCTOBER 15 & 16, 2015
TALLAHASSEE, FLORIDA

Featured Speakers



Steve Forbes
Chairman and Editor-in-Chief
Forbes Media



Raymond Kelly
Former Commissioner of the NYPD
Leading Expert on National Security



Stephen Renna
President and Chief Executive Officer
CRE Finance Council



The Center for Real Estate Education & Research, College of Business, Florida State University
www.fsurealestate.com • (850) 644-4071

We Build the Future.

**LEGACY
Leaders**

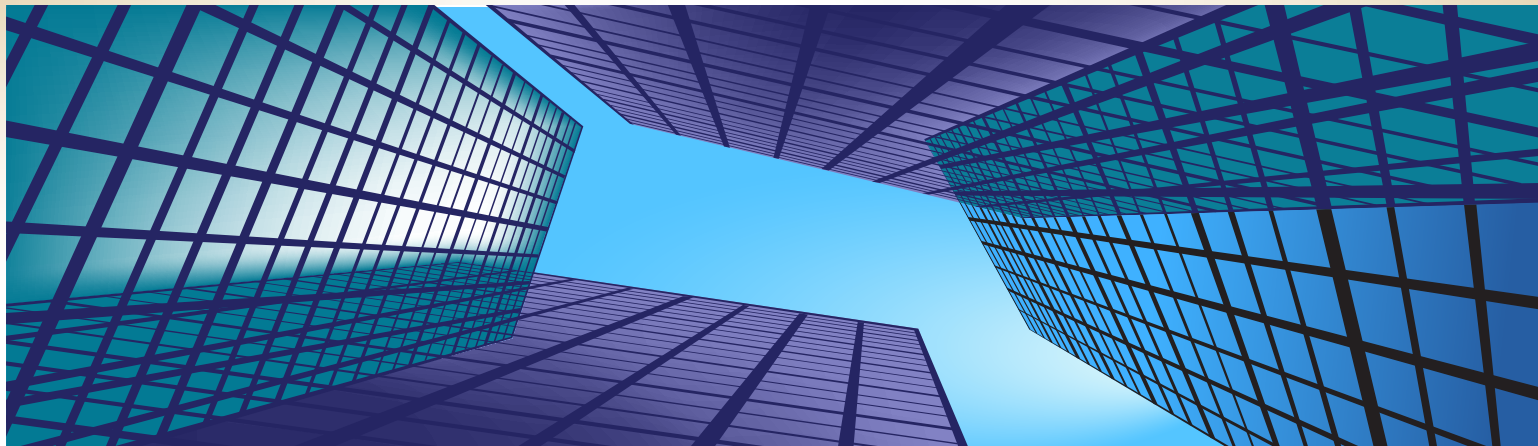


**GOLD
Sponsors**



FSUtrends.com

2015 Real Estate **TRENDS** Conference



The Real Estate Trends Conference is organized to inform participants of the emerging trends and issues facing the real estate industry, to establish and strengthen professional contacts, and to present the broad range of career opportunities available to our students. It is organized by the FSU Center for Real Estate Education & Research, the Florida State University Real Estate Network and the students' FSU Real Estate Society. This event would not be possible without the generous financial support of its sponsors.

PROGRAM PARTNERS

The Program Partner designation is reserved for those who have made major gifts to advance the Real Estate Program at Florida State University.

Donna Abood, Avison Young
Beth Azor, Azor Advisory Services, Inc.
Kenneth G. Bacheller
Mark C. Bane
Bobby Byrd, Byrd Corporation
J. Harold and Barbara M. Chastain
Marshall Cohn, The Dunhill Companies
John Crossman, Crossman & Company
Scott Darling, American Realty Advisors
Florida State Real Estate Network, Inc.
Mark Hillis & Nan Casper Hillis
Evan D. Jennings, Jennings Partners, Inc.
The Kislak Family Foundation, Inc.
Brett C. Lindquist, The Mortgage Firm, Inc.
George Livingston, NAI Realvest Partners, Inc.
Greg Michaud, Voya Investment Management
Francis J. Nardoza, REH Capital Partners, LLC

The FSU Real Estate Network is an alliance of the alumni and friends of the FSU Real Estate Program. The Network's purpose is to enhance the professional relationship among the Program's alumni, friends and students. Over 5,000 individuals are current participants of the Network.

We Build the Future.

Legacy Leaders

Centennial Management Corp.
The Kislak Family Foundation, Inc.

Gold Sponsors

Bank of America Merrill Lynch
Berkadia
CNL Commercial Real Estate
The Dunhill Companies
Florida Trend
GlassRatner Advisory & Capital Group LLC
Integra Realty Resources
**The Jim Moran Institute for
Global Entrepreneurship, FSU**
Ryan, LLC

GARNET SPONSORS

American Realty Advisors
Appraisal Institute
Berger Singerman LLP
Capright
CBRE, Inc.
Coldwell Banker Hartung and Noblin, Inc.
Cresa South Florida
Cushman & Wakefield
Eastdil Secured LLC
Florida Realtors®
Franklin Street
Kathy and Dean Gatzlaff
Ivy Z. Greaner
GreenPointe Holdings, LLC
Habersham Capital Advisors, Inc.
HFF
Byron Holmes
Hooper Construction/Urban Street
Development
Invesco Mortgage Capital Inc.
JMC Communities
Kimpton Hotels & Restaurants
Lennar
Lewis, Longman & Walker, P.A.
Metro Market Trends, Inc.
NAI TALCOR
North American Properties
NorthMarq Capital, LLC
P3 Logistic Parks
Regency Centers
REI - Real Estate InSync
R.K.M. Development Corp.
Southwest Georgia Oil Co., Inc.
Sperry Van Ness Florida
Commercial Real Estate Advisors
Stearns Weaver Miller Weissler Alhadeff
& Sitterson, P.A.
STR, Inc.
STRUCTURE Commercial Real Estate &
Property Management
Student Housing Solutions, LLC
Synovus Bank/Tallahassee State Bank
TLG Real Estate Services, PLLC
Urban Land Institute, Capital Region
Voya Investment Management

CONTRIBUTING SPONSORS

Alexander Investments International, Inc.
Avison Young
Barkett Realty Group
Bilzin Sumberg
CA Ventures, LLC
Calhoun, Collister & Parham, Inc.
Chatham Financial
The Collier Companies
Florida CCIM Chapter
The Ferber Company
Forge Capital Partners
HealthTrust
Highwoods Properties
The Keewin Real Property Company
Liberty Property Trust
Marvin F. Poer and Company
The Mortgage Firm, Inc.
Newmark Grubb Knight Frank
Ron Neyhart
Palmetto Capital Group
Prime Meridian Bank
Publix Super Markets Charities, Inc.
PwC
Redstone Commercial
Shagbark Properties, LLC
Shutts & Bowen LLP
Starwood Property Trust
Sunshine Savings Bank
Walker & Dunlop
Watkins Retail Group

PARTICIPATING SPONSORS

Active Senior Concepts
Baker, Donelson, Bearman, Caldwell &
Berkowitz, PC
Birchfield & Humphrey, P.A.
Carlton Fields Jordan Burt
CBRE - VAS Florida
Cite Partners, LLC
Cohen Commercial Realty, Inc.
Dougherty Funding, LLC
Drum Realty
Eshenbaugh Land Company
FirstPointe Advisors, LLC
The Florida Catastrophic Storm Risk
Management Center, FSU
Gaylord Merlin Ludovici & Diaz
Hubrich Holdings, LLC
Leon County Division of Tourism
(Visit Tallahassee)
Marcus & Millichap
Paradise Ventures, Inc.
The Shopping Center Group
Stiles Corp.
SunTrust Bank Commercial
Real Estate
Taylor & Mathis
Tropical Realty Appraisal Services
Wood + Partners, Inc.

INDIVIDUAL STUDENT SPONSORS

Ivy Z. Greaner
Lennar Commercial
Lorilee Medders
The Florida Catastrophic
Storm Risk Management Center
Christian Perez
The Perez Organization

2015 Real Estate TRENDS Conference



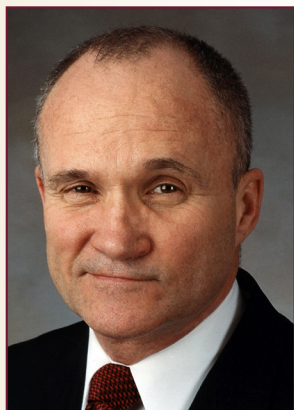
Steve Forbes

Chairman and Editor-in-Chief
Forbes Media

Forbes Media's flagship publication, Forbes, is the nation's leading business magazine with a circulation of more than 900,000. Forbes combined with Forbes Asia and the company's licensee editions together reach a worldwide audience of more than six million readers. Under Mr. Forbes' leadership, the company has launched a variety of new publications and businesses. They include: ForbesLife, the dedicated luxury lifestyle and culture magazine; Forbes Asia; and Forbes licensee editions published in Africa, Bulgaria, China, Croatia, India, Indonesia, Israel, Korea, Latvia, Middle East, Poland, Romania, Russia, Slovakia, Turkey and Ukraine.

Beginning in 1996, Forbes entered the new media arena with the launch of Forbes.com; ForbesWoman.com; RealClearPolitics.com; RealClearMarkets.com; RealClearSports.com and RealClearWorld.com which reach nearly 20 million business decision-makers each month.

Mr. Forbes writes editorials for each issue of Forbes under the heading of "Fact and Comment." A widely respected economic prognosticator, he is the only writer to have won the highly prestigious Crystal Owl Award four times. He is also the author of several books, including his most recent, *How Capitalism Will Save Us: Why Free People and Free Markets Are the Best Answer in Today's Economy*, co-authored by Elizabeth Ames. In both 1996 and 2000, Mr. Forbes campaigned vigorously for the Republican nomination for the Presidency. Key to his platform were a flat tax, medical savings accounts, a new Social Security system for working Americans, parental choice of schools for their children, term limits and a strong national defense. Mr. Forbes continues to energetically promote this agenda.



Raymond Kelly

Former Commissioner of the NYPD
Leading Expert on National Security

With 50 years in public service, including 14 years as Police Commissioner of the City of New York, Raymond W. Kelly is one of the world's most well-known and highly esteemed leaders in law enforcement. Kelly was appointed Police Commissioner in January 2002 by Mayor Michael Bloomberg, making Kelly the longest serving Police Commissioner in the city's history. In addition to twice serving as the New York City Police Commissioner, Kelly's career in public service includes directing the International Police Force in Haiti (appointed by then President Bill Clinton), serving as a Vice President of Interpol from 1996-2000, Commissioner of the U.S. Customs Service and Undersecretary of Enforcement at the U.S. Treasury Department.

In 2002, Commissioner Kelly created the first counterterrorism bureau of any municipal police department in the country. He also established a new global intelligence program and stationed New York City detectives in eleven foreign cities. Under Kelly's leadership, the NYPD lowered violent crime by 40% from 2001 levels, while also dedicating extensive resources to the successful prevention of any future terrorist attacks.

Currently, Commissioner Kelly serves as President of Cushman & Wakefield's Risk Management Services division. As President, Commissioner Kelly focuses on helping clients identify potential vulnerabilities, as well as prepare for and manage risk across a number of critical areas, including physical and cyber security intelligence, crisis management, and emergency preparedness. Kelly is also a Distinguished Visiting Fellow at the Council on Foreign Relations and an ABC News consultant.



Stephen Renna

President and Chief Executive Officer CRE Finance Council

Stephen M. Renna is President and Chief Executive Officer of the Commercial Real Estate Finance Council (CREFC). CREFC is the premier trade association of the commercial real estate finance industry worldwide. It serves as the meeting point for commercial real estate finance.

Mr. Renna has 25 years of experience working in commercial real estate from the legal, policy and trade association perspectives. Prior to joining CREFC, Mr. Renna was President of the National Association of Real Estate Investment Managers (NAREIM). NAREIM is the leading association of companies engaged in the real estate investment management business. Collectively, they manage over \$1 trillion of assets.

Mr. Renna also was Senior Vice President and Counsel at The Real Estate Roundtable, a Washington, DC based national public policy organization representing the commercial and multifamily real estate industry. Mr. Renna received his Juris Doctor degree from Catholic University's Columbus School of Law in Washington, DC and his BA with honors from Fairfield University. He is admitted to the District of Columbia and Connecticut bar associations.

2015 Real Estate **TRENDS** Conference

**George Aase**

CFO, P3 Logistic Parks,
Prague, Czech Republic

**Ben Conwell**

Senior Managing Director,
Practice Leader, E-commerce
and Electronic Fulfillment,
Cushman & Wakefield,
Seattle, Washington

**Arnaud Karsenti**

Managing Principal,
13th Floor Investments,
Miami, Florida

**Joseph Beaudoin**

Director,
Capital Markets/Multifamily
Advisory Group,
Cushman & Wakefield,
Tampa, Florida

**David Gabbai**

Partner,
The Shopping Center
Group, LLC,
Longwood, Florida

**Sam Kupersmith**

Managing Director,
Cantor Commercial Real
Estate, Atlanta, Georgia

**Adam Behlman**

Co-President, Real Estate
Investing & Services,
Starwood Property Trust,
Miami Beach, Florida

**Peter Hillakas**

Vice President,
Newmark Realty
Capital, Inc.,
Los Angeles, California

**Gregg Logan**

Managing Director,
RCLCO,
Orlando, Florida

**Angelique Brunner**

Founder and President,
EB5 Capital,
Bethesda, Maryland

**William Hold**

President,
The National Alliance for
Insurance Education and
Research,
Austin, Texas

**Mark Metheny**

Division President,
Central Florida,
Lennar,
Tampa, Florida

**Ed Burr**

President and CEO,
GreenPointe
Holdings, LLC,
Jacksonville, Florida

**Donald Huffner**

Managing Director,
Head of Americas,
AIG,
New York, New York

**Greg Michaud**

Managing Director,
Head of Real Estate Finance,
Voya Investment Management,
Atlanta, Georgia
(Conference Chair)

**Will Butler**

President,
REI-Real Estate InSync,
Tallahassee, Florida
(Chairman, Real Estate Center
Executive Board)

**Charan Jackson**

Vice President,
Real Estate,
Macy's Inc.,
Cincinnati, Ohio

**Tony Polito**

Director, Tampa/Sarasota,
Metrostudy –
A Hanley Wood Company,
Tampa, Florida

**Kathleen Carey**

Chief Content
Officer and V.P.,
Urban Land Institute,
Washington, D.C.

**John Jacobs**

Director,
Field Production,
Northwestern Mutual Real
Estate Investments, LLC,
Tampa, Florida

**John Rymer**

President,
Rymer Strategies Inc.,
Tampa, Florida

**Peter Collins**

Managing Principal,
Forge Capital Partners,
Tampa, Florida

**Derrick Johnson**

Vice President,
Corporate Segment
Marketing, UPS,
Atlanta, Georgia

**David Singer**

CEO and CFO,
Berkowitz Development
Group, Inc.,
Coconut Grove, Florida

2015 Real Estate TRENDS Conference

Thursday, October 15, 2015 • FSU University Center Club

1:30 - 2:00 PM Networking Keys! (student-only forum) Miller Hall - UCC 3300

2:15 - 3:45 PM “If I Were 21” Student/Mentor Roundtable and Q&A (students and confirmed panelists only) Miller Hall - UCC 3300

Designed specifically for students of the FSU Real Estate Program to discuss career opportunities and strategies with a selected panel.

Panelists: **Beth Azor**, Azor Advisory Services, Inc.; **Jami Barati**, Cite Partners; **Mark Becker**, Pinellas County Property Appraiser Office; **Adam Behlman**, Starwood Property Trust; **David Beshears**, Beshears & Associates; **Bryan Cohen**, Cohen Commercial Realty, Inc.; **Andrew Diaz**, Gaylord Merlin Ludovici & Diaz; **Sammie Dixon**, Prime Meridian Bank; **Martin Engelmann**, Franklin Street Valuation Advisory; **Chuck Ernst**, Paradise Ventures, Inc.; **Bill Eshenbaugh**, Eshenbaugh Land Company; **David Gabbai**, The Shopping Center Group, LLC; **Steve Garrity**, Highwoods Properties, Inc.; **Ivy Greaner**, Lennar Commercial; **Ryan Holtzman**, Taylor & Mathis; **Alan Hooper**, Hooper Construction, Inc.; **Michael Houghton**, Palmetto Capital Group; **Bruce Humphrey**, Birchfield & Humphrey, P.A.; **Michael Leeds**, Shagbark Properties, LLC; **Steven Leoni**, Student Housing Solutions, LLC; **Brett Lindquist**, The Mortgage Firm, Inc.; **Bill Lloyd**, R.K.M. Development Corp.; **Nick Mau**, Ryan, LLC; **Shawn McIntyre**, North American Properties; **Brigid O’Connor**, Publix Super Markets, Inc.; **Chase Pattillo**, CBRE, Inc.; **Carl Rieger**, Eastdil Secured LLC; **Elizabeth Roque**, Centennial Management Corp.; **Robb Sercu**, Berkshire Hathaway HomeServices Florida; **Carrie Smith**, Franklin Street; **Lewis Swezy**, Centennial Management Corp.

Moderated by John Crossman, President, Crossman & Company

4:00 - 6:00 PM Seminole Real Estate Speed Connections (open to all employers and students) Miller Hall - UCC 3300

Are you looking to recruit outstanding talent? Jointly hosted with the FSU Career Center, this session is organized for prospective employers to briefly meet with our students for Q&A.

4:15 - 5:45 PM Insider’s Tour of Athletic Facilities (Legacy Leaders, Gold and Garnet Sponsors Only)

FSU’s new football facilities are nothing short of spectacular merging tradition with technology. The multi-million dollar upgrades paid for from FSU’s Champions Campaign recognizes FSU’s great players, while giving current players an ability to improve their game through technology.

6:00 - 6:45 PM Conference Registration and Opening Reception UCC 1st Floor Lobby

6:45 - 8:45 PM DINNER AND CONFERENCE OPENING UCC 3rd Floor Banquet Hall

- **Raymond Kelly**, Former Commissioner of the NYPD and current President, Risk Management Services, Cushman & Wakefield
- **Guest Moderator: Dr. William T. Hold**, The National Alliance for Insurance Education and Research, Austin, Texas
- **Presiding: Will Butler**, President, REI-Real Estate InSync, Tallahassee, Florida (Chairman, Real Estate Center Executive Board)

9:00 - 9:30 PM Book Signing with Raymond Kelly UCC 3rd Floor Banquet Hall

9:00 - 11:30 PM Cocktail and Jazz Reception (non-student event) 6th Floor - Grill

Sponsored by Moore Bowman & Rix, P.A. – Eminent Domain & Property Rights Lawyers; Franklin Street Valuation Advisory; and Franklin Street

2015 Real Estate TRENDS Conference

Friday, October 16, 2015 • Turnbull Conference Center

7:45 - 8:30 AM Continental Breakfast

2nd Floor - Atrium

8:30 - 8:45 AM Opening Remarks and Announcements

2nd Floor - Auditorium

- **Welcome, Greg Michaud**, Managing Director – Head of Real Estate Finance, Voya Investment Management, Atlanta, Georgia (Conference Chair)

9:00 - 10:00 AM Rapid Fire: Strategies for Beyond Tomorrow

2nd Floor - Auditorium



Moderated by **Steve Renna**, President & CEO, CRE Finance Council, Washington, D.C., this promises to be a quick-paced, free-wheeling, discussion of the macro-level conditions, trends, and opportunities in the market.

This session is sponsored by The Kislak Family Foundation, Inc.

10:15 - 11:15 AM Hot Topics I (concurrent sessions 1, 2 & 3)

(1) Avenues of Capital

2nd Floor - Auditorium

Industry leaders offer their insights on today's competitive capital market environment and the outlook for the future.

- **Donald Huffner**, Managing Director, Head of Americas, AIG, New York, New York
- **John Jacobs**, Director - Field Production, Northwestern Mutual Real Estate Investments, LLC, Tampa, Florida
- **Sam Kupersmith**, Managing Director, Cantor Commercial Real Estate, Atlanta, Georgia
- **Guest Moderator: Adam Behlman**, Co-President - Real Estate Investing & Servicing, Starwood Property Trust, Miami Beach, Florida

Organized by **Lauren Hanley**, NorthMarq Capital, LLC; **Livingston Hessam**, Walker & Dunlop; and **Jeff Kinney**, Berkadia

(2) Flagship Stores: The Crown Jewels of Retail

2nd Floor - 214

This session will discuss the key trends in the retail sector, expansion strategies, market preferences, and details of recent deals.

- **Peter Collins**, Managing Principal, Forge Capital Partners, Tampa, Florida
- **David Gabbai**, Partner, The Shopping Center Group, LLC, Longwood, Florida
- **Charan Jackson**, Vice President – Real Estate, Macy's Inc., Cincinnati, Ohio

Organized by **Aileen Messinger**, Katz & Associates; **Bridgid O'Connor**, Publix Super Markets, Inc.; and **Tracy Worrell**, Crossman & Company

(3) Multi-Family and Single-Family: Is the Fire Going to Continue to Burn?

1st Floor - 103

This session will discuss market trends and directions in the residential space.

- **Joseph Beaudoin**, Director, Capital Markets/Multifamily Advisory Group, Cushman & Wakefield, Tampa, Florida
- **Ed Burr**, President and CEO, GreenPointe Holdings, LLC, Jacksonville, Florida
- **Arnaud Karsenti**, Managing Principal, 13th Floor Investments, Miami, Florida
- **Mark Metheny**, Division President – Central Florida, Lennar, Tampa, Florida
- **Guest Moderator: Tony Polito**, Director – Tampa/Sarasota, Metrostudy – A Hanley Wood Company, Tampa, Florida

Organized by **Larry Baum**, Stellar Homes Group, Inc.; **Acie Holt**, Sylvan Road Capital, LLC; and **Marc Shuster**, Berger Singerman LLP

2015 Real Estate TRENDS Conference

Friday, October 16, 2015 • Turnbull Conference Center

11:30 - 12:30 PM Hot Topics II (concurrent sessions 4, 5, & 6)

(4) Unlocking Foreign Capital: Roadmap for EB-5 Financing and its Impact

2nd Floor - 214

This session will discuss the EB-5 financing and how foreign capital is being used as an alternative financing tool for commercial real estate projects from coast to coast.

- **Angelique Brunner**, Founder and President, EB5 Capital, Bethesda, Maryland
- **Peter Hillakas**, Vice President, Newmark Realty Capital, Inc., Los Angeles, California
- **David Singer**, CEO and CFO, Berkowitz Development Group, Inc., Coconut Grove, Florida

Organized by **Carlo Bruno**, PwC; and **Stefanie Stewart**, Voya Investment Management

(5) The Amazon Effect: MEGATRENDS in E-Commerce, Logistics, and Fulfillment Distribution

1st Floor - 103

This session will discuss the major trends in e-commerce and its influence on real estate markets.

- **George Aase**, CFO, P3 Logistic Parks, Prague, Czech Republic
- **Ben Conwell**, Senior Managing Director, Practice Leader – E-commerce and Electronic Fulfillment, Cushman & Wakefield, Seattle, Washington
- **Derrick Johnson**, Vice President, Corporate Segment Marketing, UPS, Atlanta, Georgia

Organized by **Brian DePotter**, FirstPointe Advisors, LLC; **Chris Reber**, Clarion Partners LLC; and **Daniel Wagnon**, STRUCTURE Commercial Real Estate and Property Management, LLC

(6) Boomers and Millennials – Who's More Trendy?

2nd Floor - Auditorium



This session will focus on two unique generations and how their most recent lifestyle trends will impact commercial and residential real estate both nationally and regionally.

- **Kathleen Carey**, Chief Content Officer and Executive Vice President, Urban Land Institute, Washington, D.C.
- **Gregg Logan**, Managing Director, RCLCO, Orlando, Florida
- **Guest Moderator: John Rymer**, President, Rymer Strategies Inc., Tampa, Florida

Organized by the Urban Land Institute Capital Region Leadership Team

2015 Real Estate TRENDS Conference

Friday, October 16, 2015 • Turnbull Conference Center

12:45 - 2:15 PM Lunch with Featured Speaker

1st Floor Dining Room and Room 114

- **Stephen Renna**, President & CEO, CRE Finance Council, Washington, D.C.
- **Presiding: Greg Michaud**, Managing Director – Head of Real Estate Finance, Voya Investment Management, Atlanta, Georgia (Conference Chair)

2:30 - 3:30 PM Advice Straight Up!



THE JIM MORAN INSTITUTE
FOR GLOBAL ENTREPRENEURSHIP
FLORIDA STATE UNIVERSITY | COLLEGE OF BUSINESS

2nd Floor - Auditorium

Steve Forbes, Chairman and Editor-in-Chief of *Forbes Media* provides his insights on the critical issues of the day affecting business investment, growth, entrepreneurship, and innovation.

This forum is jointly sponsored by **Young America's Foundation** and **The Jim Moran Institute for Global Entrepreneurship** in the College of Business at Florida State University.

6:00 - 10:00 PM "Downtown GetDown" at Adams Street Commons

Adams Street Commons is located between Park Avenue and Jefferson Street on Adams Street. Proceeds benefit the Big Bend United Way.

Saturday, October 17, 2015

FSU vs. Louisville Football Game

Doak Campbell Stadium, Tallahassee, Florida / Time: TBA

Single game tickets may be purchased at www.seminoles.com or by calling (850) 644-1830.



Lewis V. Swezy, CEO of Centennial Management Corporation has over 36 years of experience in affordable housing development, construction, and management throughout South Florida.



Centennial Management is a full service real estate management company with development, management and certified general contractor entities.



Centennial Management Corporation

Proud Legacy Leader of the FSU Real Estate Trends Conference

7735 NW 146 ST Suite #306 • Miami Lakes, FL 33014 • 305-821-0330 • www.centennialmgt.com

Discovering Value. Developing Returns.

Real Estate Excellence Since 1906

Successfully Navigating Worlds of Opportunity for More Than a Century

The Kislak name represents legendary leadership in business and philanthropy. Corporate achievement is paralleled by the Kislak family foundations' contributions to education, arts and humanities, animal welfare and environmental preservation. Learn more at www.kislak.com.



Proud Legacy Leader of the FSU Real Estate Trends Conference

DETAIL OF MARTIN WALDSEEMÜLLER'S 1516 CARTA MARINA. FULL MAP ON VIEW IN THE JAY I. KISLAK COLLECTION AT THE LIBRARY OF CONGRESS, WASHINGTON, D.C.

2015 Real Estate **TRENDS** Conference

Bank of America Merrill Lynch



Your real estate initiatives come with complex challenges. That's why Bank of America Merrill Lynch delivers industry-leading capital strength, commercial knowledge and commitment. Our commercial real estate banking business is built on long-term relationships and significant client commitments. We understand all types of projects from the ground up. Whether you're undertaking new initiatives or acquiring existing properties, our decades of experience and customized solutions help take sophisticated investments from start to finish. We stand ready to help you succeed. Through our core business units — Commercial Real Estate Banking, Community Development Banking and Real Estate Corporate Banking — we provide financial solutions that exceed our clients' expectations.

www.bankofamerica.com

BERKADIA®

Berkadia, a joint venture of Berkshire Hathaway and Leucadia National Corporation, is an industry leading commercial real estate company providing comprehensive capital solutions and investment sales advisory and research services for multifamily and commercial properties. Berkadia is amongst the largest, highest rated and most respected primary, master and special servicers in the industry.

As a Freddie Mac Program Plus lender, Fannie Mae DUS® Multifamily Seller/Servicer, insurance company correspondent, and HUD, MAP and LEAN originator and servicer, Berkadia provides access to capital and flexible, customized lending and servicing solutions for the acquisition, construction, rehabilitation and refinance of multifamily and commercial properties. Berkadia also provides interim and short-term financing through its Proprietary Bridge Lending Program.

www.berkadia.com



CNL®

CNL Financial Group (CNL) is a leading private management firm specializing in alternative investment products that endeavors to make a world of difference to their clients, partners and the community. Anchored by over 40 years of thoughtful investing in relationships, CNL and/or its affiliates have formed or acquired companies with more than \$33 billion in assets. Performance-driven, CNL strives to achieve consistent investment returns by identifying emerging trends, accessing capital through its national distribution channels, and investing shareholder capital in a variety of credit and real estate investment products.

www.cnl.com



The Dunhill Companies is a Florida-based regional commercial real estate and property management group, based in Orlando, Florida. Dunhill provides a full range of commercial property management, leasing and brokerage services to the office, industrial and retail markets throughout Florida. Dunhill services the commercial real estate needs of investors, developers and tenants of all sizes.

www.dunhill.com

Florida Trend

Florida Trend is an award-winning business magazine read by 250,000 senior business executives, civic leaders and government officials each month. Delivered via print, tablet, mobile and e-mail newsletter, Florida Trend covers business news, executives, industry analysis, regional news round-ups and executive lifestyle. Special features focus on travel, restaurants, research and technology, personal finance, law and small business. FloridaTrend.com attracts 81,000 unique visitors. The Daily Pulse e-newsletter reaches 42,000 subscribers.

www.floridatrend.com

2015 Real Estate **TRENDS** Conference

GlassRatner Advisory & Capital Group LLC is a national specialty financial advisory services firm providing solutions to complex business problems and board level agenda items. The firm specializes in addressing business challenges such as managing through a business crisis or bankruptcy, planning and executing a major acquisition or divestiture, pursuing a fraud investigation or corporate litigation, and other top level non-typical business challenges. Its affiliate, GlassRatner Management & Realty Advisors LLC is a full-service property management company with expertise in disputed, distressed or difficult-to-manage property. It acts as Receiver, Manager, Chief Restructuring Officer or Fiduciary for troubled real estate development projects. Since 2003, GlassRatner has managed in excess of \$5 billion of real estate across a broad spectrum of assets including multifamily, student housing, office, retail, industrial, mobile home, hotel and resort, golf communities, mixed-use and fractured condominium projects.



www.glassratner.com

Integra Realty Resources, Inc. (IRR) offers the most comprehensive property valuation and counseling coverage in the United States with 66 independently owned and operated offices in 34 states and the Caribbean. IRR was created for the purpose of combining the intimate knowledge of well-established local firms with the powerful resources and capabilities of a national company. IRR offers integrated national information technology and data systems, as well as standardized valuation models and report formats, facilitating client review and analysis. Each IRR local office is led by a Senior Managing Director who is an MAI-designated member of the Appraisal Institute and has over 25 years, on average, of experience in their local markets. For more information, visit www.irr.com or blog.irr.com.



www.irr.com

A 1995 contribution from Jim and Jan Moran and JM Family Enterprises established The Jim Moran Institute for Global Entrepreneurship at the Florida State University College of Business with additional support through the years. Since 2011, further enhancements to the Institute and its outreach have been made possible by Jan Moran and The Jim Moran Foundation. The mission of The Jim Moran Institute is to cultivate, train and inspire entrepreneurial leaders through world-class education, leading-edge research and applied training, consulting and mentorship and public recognition. Faculty and staff provide students, faculty, entrepreneurs and business owners - at no charge - the tools and expertise necessary to develop strategies that establish and sustain advantages for businesses in today's competitive marketplace and to pursue new opportunities and innovations involving the start-up of new business ventures.



www.business.fsue.edu/jmi

Ryan is an award-winning global tax services firm, with the largest indirect and property tax practices in North America and the seventh largest corporate tax practice in the United States. With global headquarters in Dallas, Texas, the Firm provides a comprehensive range of state, local, federal, and international tax advisory and consulting services on a multi-jurisdictional basis, including audit defense, tax recovery, credits and incentives, tax process improvement and automation, tax appeals, tax compliance, and strategic planning. Ryan is a three-time recipient of the International Service Excellence Award from the Customer Service Institute of America (CSIA) for its commitment to world-class client service. Empowered by the dynamic myRyan work environment, which is widely recognized as the most innovative in the tax services industry, Ryan's multi-disciplinary team of more than 2,100 professionals and associates serves over 12,000 clients in more than 40 countries, including many of the world's most prominent Global 5000 companies. More information about Ryan can be found at ryan.com.



www.ryan.com

2015 Real Estate **TRENDS** Conference

THE KISLAK FAMILY FOUNDATION FUND

Generous gifts from the Kislak Family Foundation, Inc. have enabled the Center for Real Estate at FSU to organize and host its Kislak Forums in South and Central Florida, as well as a featured session at our Trends conference in Tallahassee. The Kislak gift has served as a one-to-one match gift that is used to incentivize other sponsor donations. This past year, a combined total of nearly 1,000 people attended our Kislak forums and the sponsored conference session, including over 160 of our students. In addition to the event itself, the gift enabled the Center to fund student travel to participate in these events and assist with corporate tours connected to the forums. The contacts initiated at these events have led to numerous job opportunities and internships for our students.

The Kislak Family Foundation, Inc., is a private philanthropic foundation established in 1993 by Jay and Jean Kislak to support education, arts and humanities, and other worthwhile charitable endeavors in the United States and abroad. Based in Miami Lakes, Florida, the fund provides donations to a wide range of nonprofit organizations and projects.

The FSU Kislak Forums – Miami, FL, and St. Petersburg, FL – 2015 Student Participants:

William Armor	Carson Dowd	Ivey Kelly	Matthew Smith	Robert Tyson
Seth Browning	Peyton Dowd	David Kilbride	Alexis Smith	Michael Walsh
Brandon Chapman	Julian Factor	Natalie Puccini	Nolan Sorrell	William Reynolds
Frankie Curcio	Berardo Garcia	Joseph Raia	Jordan Stenholm	Shannon Wilson
Hanso Decembre	Connor Kelley	Joshua Rainey	J.C. Tacot	Andrew Wright

BOB AND DARBY HOLD STUDENT LEADERSHIP PROGRAM

A generous gift to the Center for Real Estate from Bob and Darby Hold has allowed our students to attend national events that enrich their educational experience, while showcasing the college's brightest young men and women to industry leaders. In 2015, the Bob and Darby Hold Student Leadership Program provided the means for students to attend four major annual real estate industry events. The four annual events include: The ULI Fall Meeting, San Francisco, California; The ULI Florida Summit, Ponte Vedra, Florida; ICSC RECON, Las Vegas, Nevada; and ICSC Florida, Orlando, Florida. The gift reflects the university's commitment to extend the classroom beyond the boundaries of campus. Students who attend these events have come away with contacts, lessons on how the industry works, invaluable advice from professionals, internships and jobs.

Hold Thyssen, Inc. and Hold Realty are commercial property firms specializing in the management and brokerage of investment properties on behalf of foreign investors and institutions. The Hold Thyssen companies have been managing commercial, office, and multi-family investment properties for the past 40 years. Its current portfolio consists of over 100 commercial properties located throughout the United States.

The Bob and Darby Hold Student Leadership Program – 2015 Student Participants:

William Armor	Berardo Garcia	Joseph Raia	Robert Tyson
Kerline Benoit	Hannah Garcia	Joshua Rainey	Michael Walsh
Seth Browning	Christian Griffith	Max Samaroo	Rebecca Willcutts
Kaitlin Byers	David Huey	Nolan Sorrell	Andrew Wilson
Brandon Chapman	Michael Johnson	Jordan Stenholm	Shannon Wilson
Hanso Decembre	Ivey Kelly	Cassie Stroemer	Taylor Wood
Daniel Duque	Slaton Murray	Anthony Suarez	Nicholas Yambrovich
Julian Factor	Alexander Mussallem	Evan Swanson	
Olivia Faria	Natalie Puccini	Austin Tomoser	

2015 Real Estate TRENDS Conference

Billy Teel, Clara J. Milligan Teel and Ann Teel Hatcher Scholarship

Eric Brown
Katlin Gilman
Katherine Hull
Ivey Kelly
John “Caleb” McGahee
Robert Parker
Natalie Puccini
Andrew Wilson
Shannon Wilson

Crossman & Company Endowed Scholarship

Seth Browning
Hanso Decembre

FREC Education and Research Scholarship

Jeffery Bowers
Nicholas Carroll
William Cellar
Christina Cernkovic
Frank Cannon
Katlin Gilman
Kassandra Herrera
Payton Herschberger
Ivey Kelly
Sydney Krier
Dylan Montefusco
Ricky Ostrofsky
Elias Polsky
Joshua Rainey
Matthew Smith

Florida State University Real Estate Scholarship Award

Kristina Marasia
Victoria Russo

ICSC Foundation Undergraduate Real Estate Award

Hanso Decembre
Natalie Puccini

Mark Hillis and Nan Casper Hillis Scholarship

Julian Factor
Nicholas Yambrovich

The Peter and Jennifer Collins Real Estate Graduate Fellowship

Austin Tomoser
Andrew Wilson

THE NETWORK'S AWARD

This award is given annually in recognition of significant contributions to the Real Estate Program at Florida State University

1996–1997: Andy Hawkins
1997–1998: Larry D. Richey
1998–1999: Robert P. Hernandez
1999–2000: E. Edward Murray, Jr.
2000–2001: Andrew G. Diaz
2001–2002: Bobby Byrd
2002–2003: Beth Azor
2003–2004: Francis J. Nardoza
2004–2005: Cyrus H. Sharp III
2005–2006: John M. Crossman
2006–2007: Evan D. Jennings
2007–2008: J. Harold Chastain
2008–2009: Patrick Kelly
2009–2010: Robert Breslau
2010–2011: Jay I. Kislak
2011–2012: Kyle Riva
2012–2013: David Beshears
2013–2014: Gregory Michaud
2014–2015: Marshall Cohn
2015–2016: To be announced

THE OUTSTANDING REAL ESTATE GRADUATE AWARD

This award is given annually in recognition of exemplary achievement, motivation, and contribution while in the Real Estate Program at Florida State University. This award is given annually to a real estate student who graduated the previous academic year.

1996: Jason M. DePaula	2008: Jonathan Dickson Jordan Donaldson Andrea Torrico
1997: Julie Holt	2009: Ashton Bligh David Hector Tim Sportschuetz Claire Thomas
1998: Erin Rouse Randall Planthaber	2010: Natalie Champion Harvey Gonzalez Brad Wolfe
1999: Mark Capodilupo	2011: Blake Miller Jonathan Sieg Tom Speno
2000: Edward Aguiar Terry Cooper	2012: William Bumgarner Joe Cuffel Paul Formella
2001: LeeAnn Sheldon	2013: Rebecca Bumgarner Joseph Kelley Samuel McCarter Kristie Milam
2002: Dion Warren Stephanie Martin	2014: Eva Branning Michael Brewster Emily Moallem
2003: Maria Sanson Garrett Williams	2015: To be announced
2004: Erin Efstathion	
2005: Asher Gunter Nataly Restrepo	
2006: Patrick Joseph Greive Lauren Hanley	
2007: Kevin Dover Nicholaus Mau Melissa McRoy	

2015 Real Estate TRENDS Conference

- | | |
|--|---|
| <p>1995 John R. Lewis, President & CEO, SuperLube, Inc. and former Professor of Real Estate, FSU</p> <p>1996 Jeb Bush, President & COO, Codina Group, Inc.</p> <p> Dave Hart, Jr., Director of Intercollegiate Athletics, Florida State University</p> <p>1997 John P. McCann, Chairman of Board/ President/CEO, United Dominion Realty Trust</p> <p> Steve Robinson, Men's Head Basketball Coach, Florida State University</p> <p> Sue Semrau, Women's Head Basketball Coach, Florida State University</p> <p>1998 Peter S. Rummell, Chairman & CEO, St. Joe Company</p> <p> James M. Seneff, Jr., Chairman & CEO, CNL Group, Inc.</p> <p>1999 Daniel M. DuPree, President & COO, Cousins Properties Incorporated</p> <p> Peter Korpacz, PricewaterhouseCoopers</p> <p>2000 Henry Fishkind, Fishkind & Associates, Inc.</p> <p> Michael J. Swerdlow, Chairman & CEO, Swerdlow Real Estate Group, Inc.</p> <p>2001 The Honorable John M. McKay, Senator and Florida Senate President</p> <p> Francis J. Nardoza, Managing Director, KPMG Consulting</p> <p>2002 Frank Deford, Sr., Writer, <i>Sports Illustrated</i> & Commentator, ESPN, NPR & HBO's Real Sports</p> <p> Bruce Rendina, Chairman & CEO, The Rendina Companies</p> <p>2003 Dave Barry, Author and Columnist, The Miami Herald</p> <p> Dick Greco, Sr., Vice President, DeBartolo Property Group & former Mayor of Tampa</p> <p>2004 Herb Cohen, Negotiations Expert and Author of <i>Negotiate This!</i></p> <p> Nancy Walters, President, Very Special Events, Inc.</p> | <p>2005 Stuart Varney, Financial and Economic Journalist, Fox News</p> <p> Randell A. Smith, Co-Founder and CEO, Smith Travel Research</p> <p>2006 Shelley Broader, President & CEO, Sweetbay Supermarkets</p> <p> Ed Burr, President, LandMar Group, LLC
Lee Corso, College Football Analyst, ESPN</p> <p> Bruce Mosler, President & CEO, Cushman & Wakefield, Inc.</p> <p> Peter Rummell, Chairman & CEO, The St. Joe Company</p> <p>2007 Joe Scarborough, Former Congressman and Host of MSNBC's <i>Morning Joe</i></p> <p> The Honorable Alex Sink, Chief Financial Officer, State of Florida</p> <p>2008 Robert D. Basham, Co-founder, Outback Steakhouse & Vice Chair, OSI Restaurant Partners, LLC</p> <p> Todd Mansfield, Chairman & CEO, Crosland, LLC</p> <p> P.J. O'Rourke, Political Satirist and Best-Selling Author</p> <p> James M. Seneff, Jr., Chairman & CEO, CNL Financial Group, Inc.</p> <p> Thomas Sittima, Managing Director, Banc of America Securities</p> <p>2009 Bob Sasser, President & Chief Executive Officer, Dollar Tree, Inc.</p> <p> Don Shula, Pro Football Hall of Fame Coach</p> <p>2010 Mel Martinez, Chairman of Florida, Mexico, Central America and the Caribbean at JPMorgan Chase & Co.; Former U.S. Senator and Secretary of Housing & Urban Development</p> <p> Todd Buchholz, Former White House Economic Advisor, Author, Hedge Fund Manager, and NPR Contributor</p> <p> Manuel de Zárraga, Executive Managing Director, Holliday Fenoglio Fowler, L.P.</p> |
|--|---|

2015 Real Estate **TRENDS** Conference

2010 (continued)

Hap Stein, Chairman & CEO,
Regency Centers Corporation

Terry Stiles, Chairman & CEO, Stiles

2011 **Tucker Carlson**, Veteran journalist, political commentator, Fox News; editor-in-chief, TheDailyCaller.com

Thomas D'Arcy, President, Chief Executive Officer and Director, Grubb & Ellis Company

Rocco Ferrera, Chief Investment Officer, Stiles

Christine Romans, CNN Journalist, Anchor, and Host of *Your Bottom Line*

Kevin Rostowsky, Senior Managing Director, Southeastern/Midwest U.S., NXT Capital

Thomas Sittima, Chief Executive Officer, CNL Financial Group

2012 **Jeffrey DeBoer**, President & CEO, The Real Estate Roundtable

Scott Dennis, Managing Director and CEO, Invesco Real Estate

Andrea Kremer, Journalist, NBC Sports and HBO

Jack Nicklaus, Golf Legend & Chairman, Nicklaus Companies

Christine Romans, CNN Journalist, Anchor, and Host of *Your Bottom Line*

Wilbur Ross, Chairman & CEO, WL Ross & Co. LLC

Ash Williams, Executive Director & CIO, Florida State Board of Administration

2013 **Deirdre Bolton**, Anchor on Bloomberg Television and Host of *MoneyMoves*

Jonathan D. Gray, Global Head of Real Estate, Blackstone

Ethan Penner, Managing Partner, Monday Capital Partners

Senator Alan Simpson, Former U.S. Senator (Wyoming)

2014: **Stephen J. Dubner**, Bestselling Author, *Freakonomics* and *SuperFreakonomics*; Host of *Freakonomics Radio*; and Co-star *Freakonomics* Documentary

Ronald Kravit, Head of Real Estate Investing, Managing Member of Cerberus Real Estate Capital Management, LLC and Senior Managing Director of Cerberus Capital Management

Deirdre Bolton, Anchor, FOX Business Network

K. Anders Ericsson, Conradi Eminent Scholar and Professor of Psychology, Florida State University

Jonathan V. Last, Senior Writer, *The Weekly Standard* and Author of *What to Expect When No One's Expecting*

Dana Telsey, CEO and Chief Research Officer, Telsey Advisory Group

Anthony Graziano, Senior Managing Director, Integra Realty Resources – Miami/Palm Beach

2015: **Steve Forbes**, Chairman and Editor-in-Chief, Forbes Media

Raymond Kelly, Former Commissioner of the NYPD, Current President, Risk Management Services, Cushman & Wakefield

Stephen Renna, President and Chief Executive Officer, CRE Finance Council

Consistently ranked among the nation's Top 10 programs at public institutions, the Real Estate Program at Florida State University prepares MBA graduates for careers in real estate finance and analysis.

PURSUE AN MBA ONLINE

with a Specialization in Real Estate

Online master's degree provides flexibility, opportunity

Florida State University's Online MBA program offers a Real Estate Specialization through a rigorous set of elective courses focused on real estate finance and analysis. Thrive in one of the largest and most successful programs in the nation, and prepare yourself to effectively master the ever-changing marketplace while advancing your management skills

From the convenience of home or office, benefit from world-renowned faculty and an innovative curriculum while applying lessons learned immediately to the workplace. Close interaction among students, faculty, alumni and the business community is a hallmark of the program.

The Real Estate Program at FSU is home to the Center for Real Estate Education & Research, which fosters interaction through a complement of activities including its annual Real Estate Trends Conference, the Evan D. Jennings Executive Speaker Series, Kislak Real Estate Market Strategies Forums for senior executives, the Real Deals and Entrepreneurs Speakers Series, research symposiums and other forums in which executives and scholars can exchange ideas and share insights.

mba.fsu.edu

- Application deadlines: October 1 for spring entry, March 1 for summer entry, June 1 for fall entry
- Seven semesters to complete
- Students pay the same price, plus applicable fees, for courses regardless of location
- GMAT waiver available for highly qualified applicants
- Courses taught by the same world-class professors who teach on campus
- Named among *U.S. News & World Report's* "Best Online Graduate Programs" for 2015
- Accredited by The Association to Advance Collegiate Schools of Business (AACSB)



FLORIDA STATE UNIVERSITY
COLLEGE OF BUSINESS

Graduate Programs | (850) 644-6458 | gradprograms@business.fsu.edu

“The real estate specialization within Florida State’s Online MBA program provided me with solid instruction and the flexibility I needed to complete my master’s degree without interrupting my career. It’s an outstanding program.”

— Michael Cale, MBA 2006

Vice President-Head of Eastern Region, Voya Investment Management

International Acclaim. Individual Attention.™

Core curriculum

The MBA program consists of 39 credit hours. Current core curriculum includes the following 27 credit hours:

ACG 5026 - Financial Reporting and Managerial Control (3 hrs)
BUL 5810 - The Legal and Ethical Environment of Business (3 hrs)
FIN 5425 - Problems in Financial Management (3 hrs)
ISM 5021 - Information and Technology Management (3 hrs)
MAR 5125 - Marketing Strategy in the Global Environment (3 hrs)
MAN 5245 - Organizational Behavior (3 hrs)
MAN 5501 - Operations Management (3 hrs)
MAN 5716 - Business Conditions Analysis (3 hrs)
MAN 5721 - Strategy and Business Policy (3 hrs)

Real estate specialization

Students may customize their MBA with 9 hours of real estate elective courses:

REE 5105 - Real Estate Valuation (3 hrs)
REE 5205 - Real Estate Finance (3 hrs)
REE 5305 - Real Estate Investment (3 hrs)

Students then choose one additional course from the regular MBA elective options listed below.

FIN 5515 - Investment Management and Analysis (3 hrs)
MAR 5409 - Business to Business Marketing (3 hrs)
MAR 5465 - Purchasing and Supply Chain Management (3 hrs)
RMI 5017 - Fundamentals of Risk and Insurance (3 hrs)
MAR 5957 - Global Business Seminar (3 hrs) (includes trip abroad; extra fees apply)

Prerequisites

Designed for professionals with extensive work experience, the Florida State MBA does not require prerequisite coursework. However, it is helpful to have a general knowledge of accounting, economics, finance and statistics when beginning the program. Please note: Program requirements are subject to change.

Cost of a Florida State MBA

Students pay the same price, plus applicable fees, for courses regardless of location. For a complete list of estimated costs, see mba.fsu.edu.

Admission guidelines

Admission to the Master of Business Administration program is highly competitive. The decision is based on a portfolio of qualifications, including prior academic performance, work experience, entrance exam scores (such as the GMAT or GRE) and letters of recommendation. The entrance exam is a university requirement that may be waived if an applicant meets certain criteria. For exact criteria and instructions on requesting waivers, see business.fsu.edu/waive.

Application process checklist

I. The following items should be submitted through the Florida State Graduate Application portal, available exclusively online at <https://admissions.fsu.edu/gradapp>:

- Applicant Statement (obtain form at mba.fsu.edu)
- Current resume/C.V., clearly indicating work experience including dates and positions held, noting full-time or part-time employment. Management, business and leadership experience should also be clearly detailed.
- Two (2) letters of recommendation from employers or former college professors that speak specifically to the applicant’s ability to successfully complete the MBA program (submitted by the recommenders in the online application).
- Nonrefundable application fee of \$30.00 (see University Application or go to <http://fees.fsu.edu>)

II. The following items should be sent to the Admissions Office, PO Box 3062400, 282 Champions Way, Florida State University, Tallahassee, FL 32306-2400:

- One (1) official transcript from all colleges and universities attended
- Florida Resident Affidavit, if applicable (see University Application or <http://admissions.fsu.edu/images/pdf/residency.pdf>)
- Official GMAT/GRE score(s) and, if applicable, TOEFL/IELTS score(s) (The TOEFL/IELTS score is a University requirement for international applicants; therefore, it cannot be waived). The code to send GMAT scores to Florida State is PN8K567, and the code to send GRE or TOEFL scores is 5219.

Note to international applicants: For more information concerning financial responsibilities, degree equivalency, etc., please visit <http://admissions.fsu.edu/international/admissions/graduate.cfm>

Program Rankings & Recognitions

2015 Real Estate TRENDS Conference

- The FSU Real Estate Program is ranked 9th in the nation among public institutions; 12th among all institutions, private and public; and 6th among institutions with AACSB accredited undergraduate real estate degree or specialization programs, *U.S. News & World Report*, 2015 edition.
- FSU faculty ranked 2nd globally in research published in the three core real estate journals (1978-2008), *Journal of Real Estate Finance and Economics*, 2010.
- C.F. Sirmans, the J. Harold and Barbara M. Chastain Eminent Scholar in Real Estate, ranked No. 1, and G. Stacy Sirmans, the Kenneth G. Bacheller Professor of Real Estate, ranked No. 20, in research published in the three core real estate journals.
- Members of the real estate faculty have been the recipients of numerous distinguished awards and honors, including national fellowships, recognitions for scholarship, university teaching and service awards, and industry honors and distinctions.

MAJOR GIFTS

We recognize the generosity of those who have provided major gifts to endowments that have enabled our programs, faculty, and students to excel.

Program Partners

- | | |
|---|--|
| ■ Donna Abood, Avison Young | ■ Scott Darling, American Realty Advisors |
| ■ Beth Azor, Azor Advisory Services, Inc. | ■ Florida State Real Estate Network, Inc. |
| ■ Kenneth G. Bacheller | ■ Mark Hillis & Nan Casper Hillis |
| ■ Mark C. Bane | ■ Evan D. Jennings, Jennings Partners, Inc. |
| ■ Bobby Byrd, Byrd Corporation | ■ The Kislak Family Foundation, Inc. |
| ■ J. Harold and Barbara M. Chastain | ■ Brett C. Lindquist, The Mortgage Firm, Inc. |
| ■ Marshall Cohn, The Dunhill Companies | ■ George Livingston, NAI Realvest Partners, Inc. |
| ■ John Crossman, Crossman & Company | ■ Greg Michaud, Voya Investment Management |
| | ■ Francis J. Nardoza, REH Capital Partners, LLC |

Major Gifts to Endow the Real Estate Program

- Donna Abood Endowed Leadership Fund
- Kenneth G. Bacheller Professorship in Real Estate
- Mark C. Bane, Sr. Professorship in Business Administration
- Bartelmo Family Endowment for Excellence in Real Estate
- J. Harold and Barbara M. Chastain Eminent Scholar Chair in Real Estate
- Bryan and Karen Cohen Family Endowment for Excellence in Real Estate
- Peter and Jennifer Collins Real Estate Graduate Fellowship
- Crossman & Company Endowed Scholarship Fund for Real Estate
- Scott & Marion Darling Endowment for Excellence in Real Estate
- Barry A. Diskin Endowed Fund for Excellence in Real Estate Valuation
- Mark Hillis & Nan Casper Hillis Endowed Scholarship Fund for Real Estate
- Evan D. Jennings Executive Speaker Series in Real Estate
- Lindquist Endowed Fund for Real Estate Excellence
- Lindquist Endowed Real Estate Scholarship Fund
- Michaud Endowment for Excellence in Real Estate
- Francis J. Nardoza Endowed Scholars' Fund
- Edgar L. & Marguerite M. Schlitt Family Endowed Fund
- James M. Rudnick and Donald T. Carrigan Endowed Scholarship Fund
- Billy Teel, Clara J. Milligan Teel, and Ann Teel Hatcher Endowed Scholarship Fund

The Florida State University Foundation recognizes gifts to FSU academics through additional donor recognition societies based on type and level of giving. It is the mission of these societies to thank donors for their generosity, as well as build and nurture lasting relationships between the university and those who support it with their wealth, wisdom and work.

THE EXECUTIVE BOARD, The Center for Real Estate Education & Research

The Executive Board advises and assists the Center in its work to improve student success and opportunity; to advance the program's academic mission of teaching, research, and service; to enhance the program's resources; and to raise the program's national standing.

CONFERENCE COMMITTEE

Larry Baum, *Managing Partner*
STELLAR HOMES GROUP, INC., Ft. Lauderdale, FL

Carlo Bruno, *Director*
PWC, Tampa, FL

Brian DePotter, *Senior Manager, Property Tax*
FIRSTPOINTE ADVISORS, LLC, Coral Springs, FL

Pryse Elam, *President, Development and Investments*
CNL COMMERCIAL REAL ESTATE, Boca Raton, FL

Lauren Hanley, *Vice President*
NORTHMARQ CAPITAL, LLC, Tampa, FL

Livingston Hessam, *Vice President - Capital Markets*
WALKER & DUNLOP, Tampa, FL

Acie Holt, *Executive Director*
SYLVAN ROAD CAPITAL, LLC, Atlanta, GA

Jeffery Kinney, *Senior Managing Director*
BERKADIA COMMERCIAL MORTGAGE, LLC, Jacksonville, FL

Alan Kleber, *Managing Principal*
CRESA SOUTH FLORIDA, Miami, FL

Gregory Laskody, *Principal*
G2 REALTY ADVISORS, LLC, Coral Gables, FL

Aileen Messinger, *Vice President, Retail Brokerage*
Katz & Associates, Miami Beach, FL

Mark Metheny, *Division President - Central Florida*
LENNAR HOMES, LLC, Tampa, FL

Bridgid O'Connor, *Real Estate Manager*
PUBLIX SUPER MARKETS, INC., Lakeland, FL

Christopher Reber, *Senior Financial Analyst*
CLARION PARTNERS LLC, Atlanta, GA

Marc Shuster, *Attorney/Partner*
BERGER SINGERMAN LLP, Miami, FL

Christopher Starkey, *Senior Managing Director*
INTEGRA REALTY RESOURCES, Orlando, FL

Stefanie Stewart, *Assistant Vice President - Real Estate Finance*
VOYA INVESTMENT MANAGEMENT, Atlanta, GA

Katie Trott, *Vice President of Brokerage Services*
CNL COMMERCIAL REAL ESTATE, Tampa, FL

Daniel Wagnon, *Principal/Broker*
STRUCTURE COMMERCIAL REAL ESTATE & PROPERTY MANAGEMENT
Tallahassee, FL

Tracy Worrell, *Senior Associate*
CROSSMAN & COMPANY, Orlando, FL

DIRECTORS

George Aase, *CFO*
P3 LOGISTIC PARKS, Prague, CZECH REPUBLIC

Donna Abood, *Principal, Managing Director - Miami*
AVISON YOUNG, Coral Gables, FL

James Alderman, *Chief Development Officer*
KIMPTON HOTELS & RESTAURANTS, Roswell, GA

Beth Azor, *President*
AZOR ADVISORY SERVICES, INC., Davie, FL

Tom Bartelmo, *President and CEO*
THE KISLAK ORGANIZATION, Miami Lakes, FL

Daniel Bass, *CFO*
FORTRESS INVESTMENT GROUP LLC
New York, NY

David Beshears, *Principal*
BESHEARS & ASSOCIATES, Tampa, FL

Rob Boos, *President and COO*
BOOS DEVELOPMENT GROUP, INC., Clearwater, FL

Reggie Bouthillier, *Shareholder*
STEARNS WEAVER MILLER WEISSLER
ALHADEFF & SITTERSON, P.A., Tallahassee, FL

Edward Burr, *President and CEO*
GREENPOINTE HOLDINGS, LLC, Jacksonville, FL

Will Butler, *President (Board Chair)*
REI - REAL ESTATE INSYNC, Tallahassee, FL

Jay Caplin, *Managing Principal*
STEELBRIDGE CAPITAL, LLC, Miami, FL

Michael Cheezem, *CEO*
JMC COMMUNITIES, St. Petersburg, FL

Kevin Collins, *Managing Director, Head of Commercial Mortgage Credit*
INVESCO MORTGAGE CAPITAL INC.
Louisville, KY

John Crossman, *President*
CROSSMAN & COMPANY, Orlando, FL

Scott Darling, *President and Executive Managing Director, Portfolio Management*
AMERICAN REALTY ADVISORS, Glendale, CA

Manuel de Zárraga, *Executive Managing Director*
HFF, Miami, FL

Gary DeLapp, *President*
INVITATION HOMES, LP, Dallas, TX

Wellington Denahan, *Executive Chairman*
ANNALY CAPITAL MANAGEMENT, INC.
New York, NY

Martin Engelmann, *President*
FRANKLIN STREET VALUATION ADVISORY
Tampa, FL

Rocco Ferrera, *CIO*
STILES, Ft. Lauderdale, FL

Ivy Z. Greaner, *Executive Vice President*
LENNAR COMMERCIAL, Coral Gables, FL

Michael Harrell, *President*
SOUTHWEST GEORGIA OIL CO., INC.
Bainbridge, GA

Lawrence (Chip) Hartung, *President*
COLDWELL BANKER HARTUNG AND NOBLIN, INC., Tallahassee, FL

Robert Hernandez, *Managing Director*
NORTHMARQ CAPITAL, LLC, Tampa, FL

Mark Hillis, *(Retired)*
SUNTRUST BANK ATLANTA, Tallahassee, FL

Robert Hold, *President*
HOLD THYSSEN, INC., Winter Park, FL

Byron Holmes, *Consultant*
Suwanee, GA

Alan Hooper, *President/Owner*
HOOPER CONSTRUCTION, INC., Ft. Lauderdale, FL

Gregg Ickes, *Principal, Managing Director of Services*
CNL COMMERCIAL REAL ESTATE, Orlando, FL

Charles Johnson, *President*
C.H. JOHNSON CONSULTING, INC., Chicago, IL

Patrick Kelly, *President*
REDSTONE COMMERCIAL, Tampa, FL

Steven Leoni, *Chairman*
STUDENT HOUSING SOLUTIONS, LLC
Tallahassee, FL

Brett Lindquist, *Co-Founder and CEO*
THE MORTGAGE FIRM, INC., Altamonte Springs, FL

William Lloyd, *President*
R.K.M. DEVELOPMENT CORP., St. Petersburg, FL

Shawn McIntyre, *Partner*
NORTH AMERICAN PROPERTIES, Ft. Myers, FL

Gregory Michaud, *Managing Director - Head of Real Estate Finance*
VOYA INVESTMENT MANAGEMENT, Atlanta, GA

Greg Morrison, *Principal, Managing Director*
AVISON YOUNG, Orlando, FL

E. Edward Murray, Jr., *President/Broker*
NAI TALCOR, Tallahassee, FL

Frank Nardoza, *Chairman and CEO*
REH CAPITAL PARTNERS, LLC, Ft. Lauderdale, FL

Lee Nelson, *Partner*
SHUTTS & BOWEN LLP, Tampa, FL

Ron Neyhart, *Senior Managing Director*
CBRE, Atlanta, GA

Michael Pou, *President*
HABERSHAM PARTNERS, INC., Atlanta, GA

Larry Richey, *Senior Managing Director, Florida Market Leader*
CUSHMAN & WAKEFIELD, Tampa, FL

Carl Rieger, Jr., *Managing Director*
EASTDIL SECURED LLC, Irvine, CA

Kyle D. Riva, *CEO and President*
ALEXANDER INVESTMENTS INTERNATIONAL, INC., Winter Park, FL

James Rudnick, *Owner*
RUDNICK DEVELOPMENT, INC., Tallahassee, FL

Cyrus Sharp, *Senior Managing Director*
GLASSRATNER ADVISORY & CAPITAL GROUP LLC, Atlanta, GA

James Shindell, *Partner*
BILZIN SUMBERG, Miami, FL

David Singer, *CEO and CFO*
BERKOWITZ DEVELOPMENT GROUP, INC.
Coconut Grove, FL

Brian Smith, *President and COO*
REGENCY CENTERS, Jacksonville, FL

Randell Smith, *CEO and Co-Founder*
STR, INC., Hendersonville, TN

Heather Turner, *Managing Director*
DINAPOLI CAPITAL PARTNERS, El Segundo, CA

Ashbel "Ash" Williams, Jr., *Executive Director and CIO*
FLORIDA STATE BOARD OF ADMINISTRATION
Tallahassee, FL

We Build the Future.

2015 Real Estate TRENDS Conference

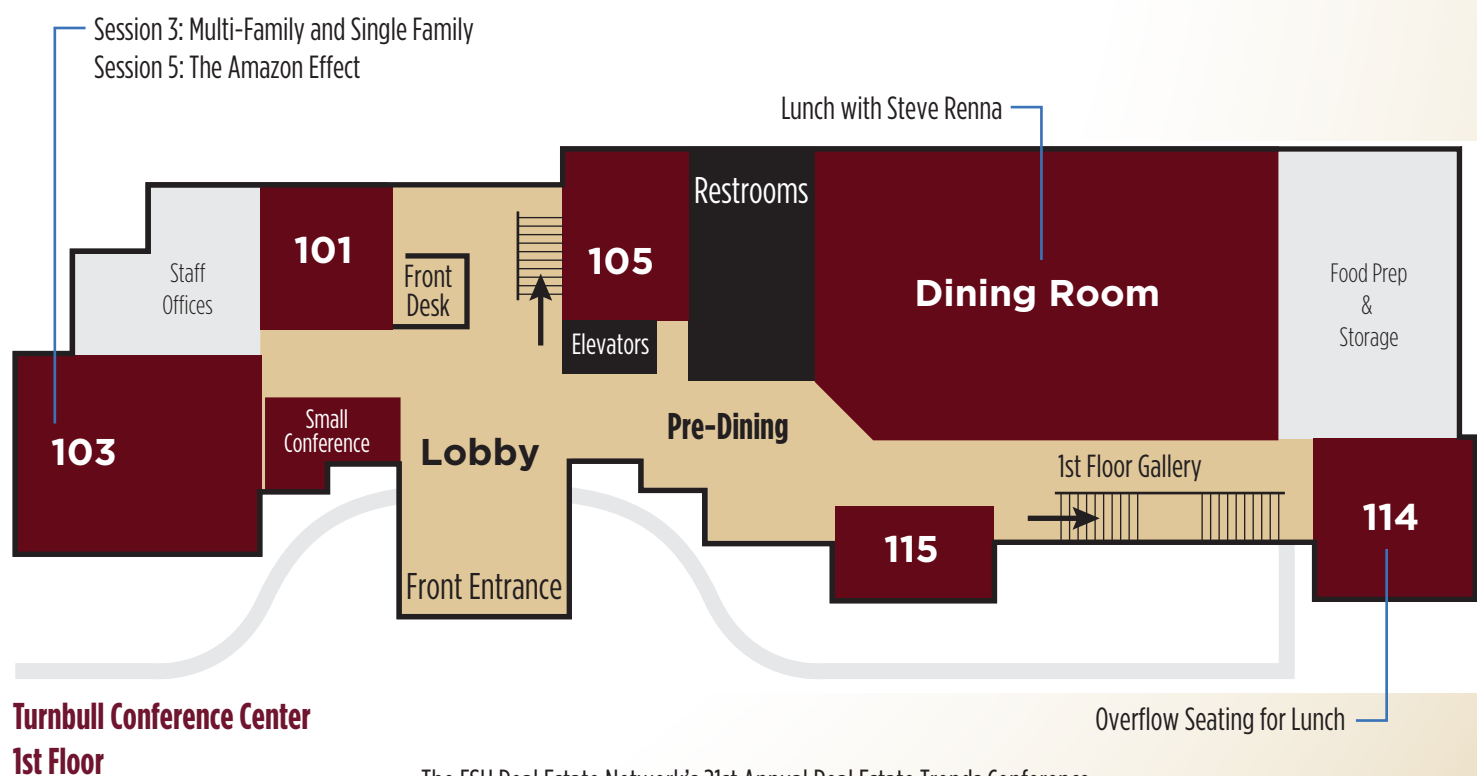
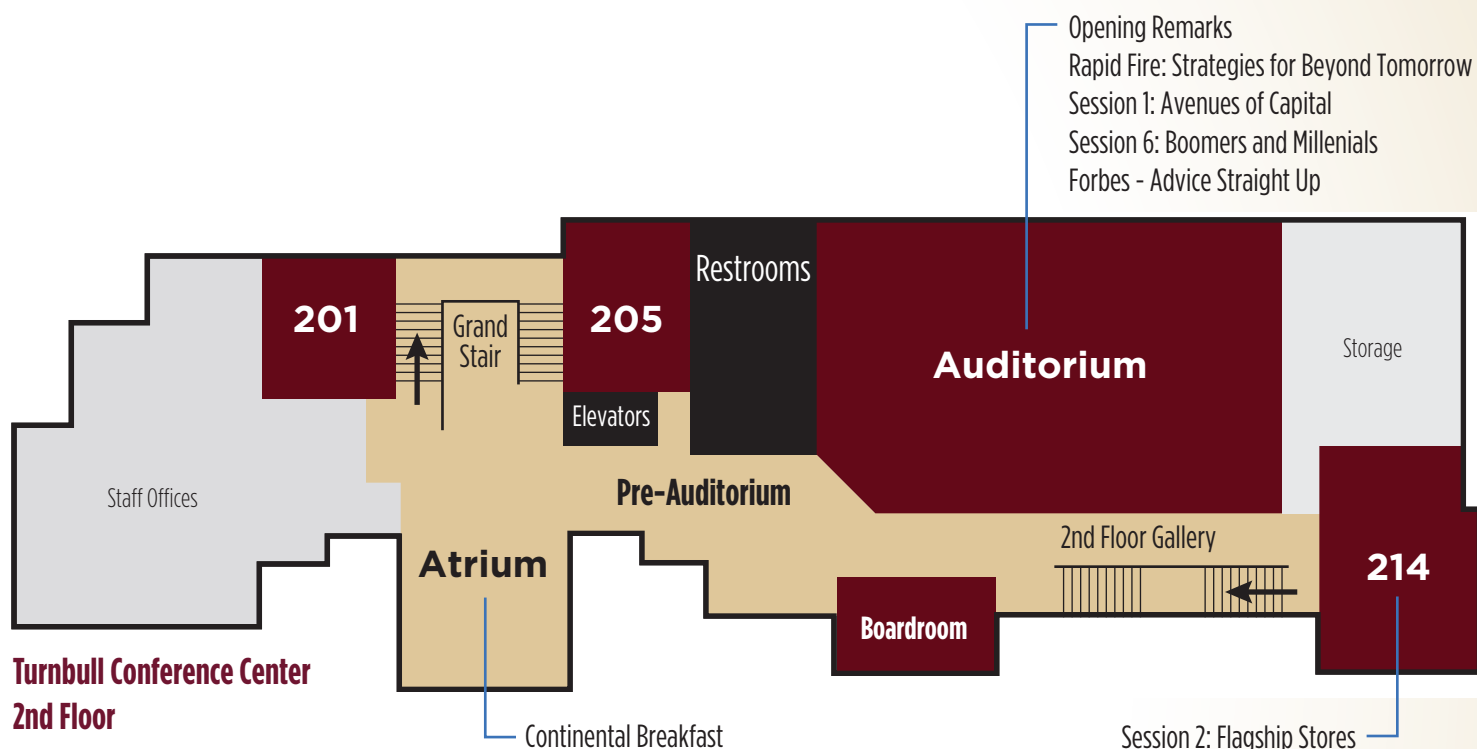
We thank our 1995-2015 sponsors who have made this event possible for 21 years!!!

Abbott Realty Services • Abbott Resorts • Abood & Associates • Abood Wood-Fay Commercial Real Estate Group • Access Point Financial • Acquisition Consultants • Acquisition Consultants / A.C. Properties • Active Senior Concepts • Advantis Real Estate Services • Advisors Real Estate Group • AFA Real Estate Services • Ajax Building Corporation • Alderman Hospitality • Alexander Investments International, Inc. • American General Land Development • American Realty Advisors, Scott Darling • The Apartment Group • Appraisal Institute • Appraisal Institute Florida Gulf Coast Chapter • Appraisal First • ARA • Atlanta FSU Real Estate Network-Mike Pou • Atlas Real Estate Group • Arthur J. Gallagher Risk Management Services & Chubb Group of Insurance Companies • Ausley & McMullen, P.A. • Avison Young, Donna Abood • Azor Advisory Services, Beth Azor • Baker, Donelson, Bearman, Caldwell & Berkowitz, PC • Bank of America • Bank of America Merrill Lynch • Barkett Realty Group • BBG (Butler Burgher Group) • Beck Property Company, LLC • Bella Vista Group • Berger Singerman LLP • Berkadia • Berkowitz Development Company • Beshears & Associates • Bilzin Sumberg • Birchfield & Humphrey, PA • Boos Development Group • Booth Companies • Boutin Valuation Services • Branch Banking & Trust (BB&T) • Bricklemyer Smolker & Bolves, P.A. • Boyd & DuRant, Attorneys • Brigham Moore Gaylord Schuster Merlin & Tobin • Brigham Moore LLP • Tom and Jane Brown • Brown Bevis Real Estate Appraisers • Byrd Corporation-Bobby Byrd • C. Michael Polk & Associates • CA Ventures, LLC • Calhoun, Collister & Parham • Calhoun, Dreggors & Associates • Capright • Carlton Fields, P.A. • Carlton Fields Jorden Burt • CBRE • CBRE | VAS Florida • CB Richard Ellis • Centennial Management Corp. • Chatham Financial • CCIM Florida Chapter • Chief Appraisal Services • CIBC World Markets • Ciminelli Real Estate Services • Cite Partners, LLC • Citizens Housing Development Company • Clark Partington Hart Larry Bond & Stackhouse • Clear Springs Land Company • CNL Bank • CNL Financial Group • CNL Commercial Real Estate • Cohen Commercial Realty • Coldwell Banker Hartung and Noblin • The Collier Companies • Colliers Abood Wood-Fay • Colliers Arnold • Colliers International South Florida-Donna Abood • Colonial Bank, N.A. • Kevin and Michelle Collins • Commercial Capital • Commercial Net Lease Realty • Community Bank of Florida • Commercial Management of Naples • Cousins Properties • CPH Engineers • Cresa South Florida • Crescent Resources • Crossman & Company, John Crossman • Cushman & Wakefield • Scott Darling • Diamond Datamine • Andrew G. Diaz • April and Ryan Dietz • Directed Capital Resources • Barry A. Diskin • Dougherty Funding, LLC • Douglas Partners • Drum Realty • The Dunhill Companies, Marshall Cohn • Eastdil Secured LLC • E&Y Kenneth Leventhal Real Estate Group • Echelon Development • Echelon International Corp. • Economic Development Council of Tallahassee/Leon County • Edwards Realty Group, LLC • Epoch Properties • Equity One • Ernst & Young • Eshenbaugh Land Company • Fellers, Schewe, Scott & Roberts • The Ferber Company • First American Title Insurance Company – National Commercial Services • FirstPointe Advisors, LLC • The Fitzgerald Group • Florida Association of REALTORS® • The Florida Catastrophic Storm Risk Management Center • Florida Investors Magazine • Florida Property Tax Consultants • Florida Real Estate Journal • Florida Realtors® • Florida's Great Northwest • Florida State Real Estate Network • Florida Trend • Floridian Community Bank • Forge Capital Partners • Franklin Street • Kathy and Dean Gatzlaff • Gaylord Merlin Ludovici & Diaz • Gaylord Merlin Ludovici Diaz & Bain • George Livingston • GlassRatner Advisory & Capital Group LLC • Global Group Investments • GMAC Commercial Mortgage • Granger Development • Granger Properties • GrayHarris • Ivy Z. Greaner • Greenberg Traurig • GreenPointe Holdings • Grubb & Ellis | Commercial Florida • Grubb & Ellis Company • GSI Executive Search • GVA Advantis • Habersham Capital Advisors • Hancock Bank • Hawkins Construction • HealthTrust • The Hector Company • Hendry Real Estate Advisors • HFF • Highwoods Properties • Mark Hillis and Nan Casper Hillis • Holliday Fenoglio Fowler, L.P. • Hold Thyssen • Byron Holmes • HomeBanc Mortgage Corporation • Hooper Construction/Urban Street Development • Hubrich Holdings, LLC • Hunter Financial Group • Hunter's Creek (American General Land Development • ING Investment Management Americas • In-Rel Properties • Integra Realty Resources • Invesco Mortgage Capital • Invitation Homes, LP • IXIS Real Estate Capital • The Jim Moran Institute for Global Entrepreneurship, FSU • Jacksonville Economic Development Commission • Jennings Partners, Inc. • JG Housing Solutions LLC | JG BMM Lakeland VA LLC • JMC Communities • Jones Lang LaSalle • The Keewin Real Property Company • Ketcham Appraisal Group • KeyBank Real Estate Capital • Kimpton Hotels & Restaurants • The Kislak Family Foundation, Inc. • Koger Equity • KPMG Consulting • Kroenke-Gordon-Schaller Properties • Lakewood Ranch Commercial • LandAmerica OneStop • LandMar Group • LaSalle Bank • Legg Mason Real Estate • Lend Lease Real Estate Investments • Lennar • Leon Co. Division of Tourism Development (Visit Tallahassee) • Lewis Realty Associates • Lewis, Longman & Walker, P.A. • Liberty Property Trust • Jack Lowell • Marcus & Millichap • Marcus Partners • Marvin F. Poer & Company • McDonald's Corporation • MetLife Real Estate Investors • Metro Market Trends • Michael Mastry & Associates • Michaud Family • The Mortgage Firm, Inc., Brett C. Lindquist • Murphy Land and Retail Services • NAI Realvest Partners, Inc., George Livingston • NAI TALCOR • NationsBank • Natixis Real Estate Capital • NetFunding.com • Newmark Grubb Knight Frank • New Plan Excel Realty Trust • Nexus Financial Group • Ron Neyhart • North American Properties • NorthMarq Capital • Northwestern Investment Management Company • Northwestern Mutual Life Insurance Company • Northwestern Mutual Real Estate Investments • O.R. Colan Associates • Oasis Development • Orlando Getaway Partners • Osprey Real Estate • P3 Logistic Parks • Palmetto Capital Group • Paradise Ventures • PBS&J • PG Ventures • Popp, Gray & Hutcheson • Popp Hutcheson PLLC • Premier Construction & Development • Premier Property Group • Prestige Builders Partners • PricewaterhouseCoopers • Prime Meridian Bank • Property Tax Services • Prudential Commercial Real Estate FL • Prudential Mortgage Capital Company • Publix Super Markets • Publix Supermarkets Charities, Inc. • PwC • Raymar Associates • RE Analysts • Real Estate Marketing Consultants • Red Mortgage Capital • Redstone Commercial • Regency Centers • Regional Capital Fund • Regions • REH Capital Partners, Frank Nardoza • Reily, Fisher, & Solomon • REI-Real Estate InSync • RE Marketing Consultants • The Rendina Companies • Residential Elevators • Riversong Apartments of Bradenton Florida • Riverwalk Apartments at Bradenton • R.K.M. Development Corp. • Roberts Commercial Real Estate Services • RRE Realty Services • Rubin Real Estate • The Ruthvens • Ryan, LLC • Savlov & Anderson, P.A. • The Sembler Company • Shagbark Properties, LLC • Cyrus and Nancy Sharp • The Shopping Center Group • The Shoptaw Group • SHS Management • Shutts & Bowen • SIKON Construction • Smith Travel Research • Southampton Properties • Southeast Land Corporation • SouthGroup/SouthGroupApartments.com • Southwest Georgia Oil Co., Inc. • Sperry Van Ness • Sperry Van Ness | Southland Commercial • St. Joe Commercial • St. Joe Land Company • The St. Joe Company • Starling Group • Starwood Hotels and Resorts Worldwide • Starwood Property Trust • Starwood Vacation Ownership • The Staubach Company • Stearns Weaver Miller Weissler Alhadeff & Sitterson, P.A. • Stellar Homes • Stiles • STR, Inc. • STRUCTURE Commercial Real Estate & Property Management • Student Housing Partners • Student Housing Solutions • The Sullivan Group of Florida • Summit Group Commercial Properties, LLC • Sunshine Savings Bank • SunTrust Bank • SunTrust Bank Commercial Real Estate • Sylvan Road Capital • Synovus Bank • Synovus Bank/Tallahassee State Bank • TALCOR Commercial Real Estate Services • Tallahassee Land Company • Tango Hotel Properties • Tavernier Capital Partners • Taylor & Mathis • TD Bank • Terranova Corporation • Thomas D. Wood & Company • Thomson Reuters • Thomson Reuters ONESOURCE Property Tax • Timberlane Appraisal Associate-Matt Ryan • TLG Real Estate Services, PLLC • Tom McMullen • Trammell Crow Company • Trenam Kemker • Tri-Stone Companies • Tropical Realty Appraisal Services • Tupelo Development • The Tupelo Group • United Dominion Realty Trust • Urban Economics • The Urban Group • Urban Land Institute-North Florida • Urban Land Institute, Capital Region • USAA Realty Company • The Villages / Crossman & Company John Crossman • The Villages of Lake Sumter • Vista Realty Partners • Voya Investment Management, Greg Michaud • VRS / RJS Jackson Group • VRS Properties • Walker & Dunlop • Watkins Retail Group • Wattermarq Capital • WeinPlus Real Estate Advisory Services • WGCompass Realty Companies • Whitewater Realty Advisors • Wood + Partners Inc. • Wyndham Hotel Group

Turnbull Conference Center Map

2015 Real Estate **TRENDS** Conference

Friday, October 16, 2015 • Turnbull Conference Center, 555 W Pensacola St, Tallahassee, FL 32306



2015 Real Estate TRENDS Conference

THURSDAY, October 15, 2015



Location: FSU University Center Club

1:30 - 2:00 PM	Networking Keys! (student-only forum)	Miller Hall - UCC 3300
2:15 - 3:45 PM	"If I Were 21" Student/Mentor Roundtable and Q&A	Miller Hall - UCC 3300
4:00 - 6:00 PM	Seminole Real Estate Speed Connections	Miller Hall - UCC 3300
4:15 - 5:45 PM	Insider's Tour of Athletic Facilities (Legacy, Gold and Garnet Sponsors)	
6:00 - 6:45 PM	CONFERENCE REGISTRATION (1st Floor Univ. Ctr.) AND OPENING RECEPTION	3rd Floor - Banquet Hall
6:45 - 8:45 PM	Dinner and Conference Opening Raymond Kelly, Former Commissioner of the NYPD and Leading Expert on National Security	3rd Floor - Banquet Hall
9:00 - 9:30 PM	Book Signing with Raymond Kelly	3rd Floor - Banquet Hall
9:00 - 11:30 PM	Cocktail and Jazz Reception (non-student event)	6th Floor - Grill

FRIDAY, October 16, 2015

Location: FSU Turnbull Conference Center

7:45 - 8:30 AM	Continental Breakfast	2nd Floor - Atrium
8:30 - 8:45 AM	Opening Remarks and Announcements	2nd Floor - Auditorium
9:00 - 10:00 AM	Rapid Fire: Strategies for Beyond Tomorrow	2nd Floor - Auditorium
10:15 - 11:15 AM	Hot Topics I (concurrent sessions 1, 2, 3)	
(1)	Avenues of Capital	2nd Floor - Auditorium
(2)	Flagship Stores: The Crown Jewels of Retail	2nd Floor - 214
(3)	Multi-Family and Single-Family: Is the Fire Going to Continue to Burn?	1st Floor - 103
11:30 - 12:30 PM	Hot Topics II (concurrent sessions 4, 5, 6)	
(4)	Unlocking Foreign Capital: Roadmap for EB-5 Financing and its Impact	2nd Floor - 214
(5)	The Amazon Effect: MEGATRENDS in E-Commerce, Logistics, and Fulfillment Distribution	1st Floor - 103
(6)	Boomers and Millennials - Who's More Trendy?	2nd Floor - Auditorium
12:45 - 2:00 PM	Lunch with Featured Speaker Stephen Renna, President & CEO, CRE Finance Council, Washington, D.C.	1st Floor - Dining Room and Room 114
2:30 - 3:30 PM	Advice Straight Up! Steve Forbes, Chairman and Editor-in-Chief of Forbes Media	2nd Floor - Auditorium
6:00 - 10:00 PM	"Downtown GetDown"	Adams Street Commons

We Build the Future.